



ODEUR

AERIAL AMBITIONS

SPRING / SUMMER 2012



ABOUT THE COLLECTION

A HUNGER FOR MORE. SWEDISH LABEL ODEUR CONTINUES TO EXPLORE THE UNISEX VISION OF A PLAYFUL, AWARE SILHOUETTE IN (THEIR) ITS SPRING/SUMMER 2012 COLLECTION NAMED AERIAL AMBITIONS. THE COLLECTION IS PRESENTED IN A WIDE RANGE OF FABRICS INCLUDING FINE COTTON, SILK AND LINEN. THIS SEASON'S COLOUR PALETTE IS MONOCHROME IN WHITE AND BLACK INCLUDING SOME SHADES OF GREY.

ODEUR'S VERY SPECIFIC AESTHETIC IS KEPT WELL IN THIS RATHER SPORTY COLLECTION, THAT FINDS ITS INSPIRATION IN THE HUMAN ILLUSION OF BEING ABLE TO FLY, AS IN THE TALES OF ICARUS THAT COVERS HUMAN CONCEIT. THE SILHOUETTE IS STILL PLAYFUL AND THE FOCUS ON DETAILS AS WELL AS THE UNEXPECTED CUTTINGS CHARACTERIZE THE COLLECTION, AS ALWAYS.

A BRIEF HISTORY

ODEUR WAS FOUNDED IN STOCKHOLM IN 2006 AS A BRAND EXPERIMENT, USING A SPECIFIC WHITE, LIGHT AND CLEAN SCENT INSTEAD OF A VISUAL LOGOTYPE TO LABEL THE GRAPHIC AND DRAMATIC, YET PLAYFUL GARMENTS. THE FIRST COLLECTION INCLUDED A FEW T-SHIRT STYLES THAT WERE DISTRIBUTED AMONGST A FEW INITIAL CLIENTS IN SWEDEN AND JAPAN.

TODAY ODEUR IS DESIGNED BY PETTER HOLLSTRÖM AND GORJAN LAUSEGER AND HAS SPREAD TO 17 COUNTRIES, SELLING JEANS, OUTERWEAR, ACCESSORIES AND FASHION CLOTHING. THE COLLECTION IS REPRESENTED AT, AMONGST OTHERS, HARVEY NICHOLS IN HONG KONG, TEMPORARY SHOWROOM IN BERLIN, OKI-NI IN LONDON AND OAK NYC IN NEW YORK.

CONTACT DETAILS

CONTACT@ODEUR.SE
+46 70 29 27 104
WWW.ODEUR.SE



STYLE № 10 01 1-1

ASKEW T-SHIRT

PRINT/DETAIL

»A TRIANGLE CUBE« IN GREY.

FABRIC

100% FINE COTTON.

COLOR

WHITE.

AVAILABLE SIZES

X-SMALL, SMALL, MEDIUM, LARGE.

ABOUT THE STYLE

STANDARD FIT T-SHIRT IN FINE COTTON WITH SKEW SEAM UNDER LEFT ARM STRETCHING TO THE BACK. SLIGHTLY LONGER BACK. »A TRIANGLE CUBE« ART-WORK PRINTED ON FRONT.



STYLE № 10 01 1-2

ASKEW T-SHIRT

PRINT/DETAIL

»HUBRIS WINGS PRINT« IN GREY.

FABRIC

100% FINE COTTON.

COLOR

DUST.

AVAILABLE SIZES

X-SMALL, SMALL, MEDIUM, LARGE.

ABOUT THE STYLE

STANDARD FIT T-SHIRT IN FINE COTTON WITH SKEW SEAM UNDER LEFT ARM STRETCHING TO THE BACK. SLIGHTLY LONGER BACK. »HUBRIS WINGS PRINT« ARTWORK PRINTED ON FRONT.



STYLE № 10 01 1-3

ASKEW T-SHIRT

PRINT/DETAIL

»A PRINT« IN WHITE.

FABRIC

100% FINE COTTON.

COLOR

BLACK.

AVAILABLE SIZES

X-SMALL, SMALL, MEDIUM, LARGE.

ABOUT THE STYLE

STANDARD FIT T-SHIRT IN FINE COTTON WITH SKEW SEAM UNDER LEFT ARM STRETCHING TO THE BACK. SLIGHTLY LONGER BACK. »A PRINT« ARTWORK PRINTED ON FRONT.



STYLE № 10 02 1-1

AXIS T-SHIRT

PRINT/DETAIL

AXIS OVERLOCK SEAM OVER CHEST AND BACK IN PLASTIC THREAD.

FABRIC

100% FINE COTTON.

COLOR

WHITE.

AVAILABLE SIZES

X-SMALL, SMALL, MEDIUM, LARGE.

ABOUT THE STYLE

SLIGHTLY OVER SIZED T-SHIRT IN FINE COTTON WITH PLASTIC OVERLOCK SEAM ON CHEST AND BACK.



STYLE № 10 02 1-2

AXIS T-SHIRT

PRINT/DETAIL

AXIS OVERLOCK SEAM OVER CHEST AND BACK IN WHITE THREAD.

FABRIC

100% FINE COTTON.

COLOR

DUST.

AVAILABLE SIZES

X-SMALL, SMALL, MEDIUM, LARGE.

ABOUT THE STYLE

SLIGHTLY OVER SIZED T-SHIRT IN FINE COTTON WITH WHITE OVERLOCK SEAM ON CHEST AND BACK.



STYLE № 10 03 1-1

FEATHER T-SHIRT

PRINT/DETAIL

OVERLOCK SEAM TWISTED FROM NECK TO BOTTOM.

FABRIC

100% FINE COTTON.

COLOR

CLOUD.

AVAILABLE SIZES

X-SMALL, SMALL, MEDIUM, LARGE.

ABOUT THE STYLE

NARROW T-SHIRT IN FINE COTTON WITH OVERLOCK SEAM STRETCHING FROM FRONT OF NECK AROUND THE GARMENT DOWN TO LEFT SIDE. BLEACHED FABRIC EFFECT. RAW HEMS.



STYLE № 10 03 1-2

FEATHER T-SHIRT

PRINT/DETAIL

OVERLOCK SEAM TWISTED FROM NECK TO BOTTOM.

FABRIC

100% COTTON RIB.

COLOR

BLACK.

AVAILABLE SIZES

X-SMALL, SMALL, MEDIUM, LARGE.

ABOUT THE STYLE

NARROW T-SHIRT IN FINE COTTON WITH OVERLOCK SEAM STRETCHING FROM FRONT OF NECK AROUND THE GARMENT DOWN TO RIGHT SIDE. RIB FABRIC. RAW HEMS.



STYLE N° 10 04 1-1

PATCH T-SHIRT

PRINT/DETAIL

RAW VISIBLE FABRIC SEAMS.

FABRIC

100% FINE COTTON.

COLOR

GREY.

AVAILABLE SIZES

X-SMALL, SMALL, MEDIUM, LARGE.

ABOUT THE STYLE

REGULAR FIT RAGLAN STYLE T-SHIRT IN FINE COTTON
WITH VISIBLE RAW SEAMS. RAW HEMS.



STYLE № 10 04 1-2

PATCH T-SHIRT

PRINT/DETAIL

RAW VISIBLE FABRIC SEAMS.

FABRIC

100% FINE COTTON.

COLOR

BLACK.

AVAILABLE SIZES

X-SMALL, SMALL, MEDIUM, LARGE.

ABOUT THE STYLE

REGULAR FIT RAGLAN STYLE T-SHIRT IN FINE COTTON
WITH VISIBLE RAW SEAMS. RAW HEMS.



STYLE N° 10 05 1-1

MELT T-SHIRT

PRINT/DETAIL
TWISTED DOUBLE LAYER.

FABRIC
100% VISCOSE.

COLOR
WHITE.

AVAILABLE SIZES
X-SMALL, SMALL, MEDIUM, LARGE.

ABOUT THE STYLE
REGULAR FIT DOUBLE LAYERED T-SHIRT IN FINE VIS-
COSE MATERIAL WITH TWISTED EFFECT ON BODY.
ONE LAYER FABRIC ON SLEEVES.



STYLE N° 10 05 1-2

MELT T-SHIRT

PRINT/DETAIL
TWISTED DOUBLE LAYER.

FABRIC
100% MODAL.

COLOR
BLACK.

AVAILABLE SIZES
X-SMALL, SMALL, MEDIUM, LARGE.

ABOUT THE STYLE
REGULAR FIT DOUBLE LAYERED T-SHIRT IN FINE VIS-
COSE MATERIAL WITH TWISTED EFFECT ON BODY.
ONE LAYER FABRIC ON SLEEVES.



STYLE N° 10 06 1-1

NEST SINGLET

PRINT/DETAIL

FABRIC
100% VISCOSE.

COLOR
WHITE.

AVAILABLE SIZES
X-SMALL, SMALL, MEDIUM, LARGE.

ABOUT THE STYLE
SINGLET WITH OPEN DOUBLE LAYER FABRIC ON BACK.



STYLE № 10 06 1-2

NEST SINGLET

PRINT/DETAIL

FABRIC

100% MODAL.

COLOR

BLACK.

AVAILABLE SIZES

X-SMALL, SMALL, MEDIUM, LARGE.

ABOUT THE STYLE

SINGLET WITH OPEN DOUBLE LAYER FABRIC ON BACK.



STYLE N° 10 07 1-1

FEATHER SINGLET

PRINT/DETAIL

FABRIC

100% FINE COTTON.

COLOR

CLOUD.

AVAILABLE SIZES

X-SMALL, SMALL, MEDIUM, LARGE.

ABOUT THE STYLE

NARROW SINGLET IN FINE COTTON WITH OVERLOCK SEAM STRETCHING FROM FRONT OF NECK AROUND THE GARMENT DOWN TO LEFT SIDE. BLEACHED FABRIC EFFECT. RAW HEM IN BOTTOM.



STYLE № 10 08 1-1

AXIS TANK

PRINT/DETAIL

»AERIAL TEXT PRINT« IN BLACK.

FABRIC

100% FINE COTTON.

COLOR

WHITE.

AVAILABLE SIZES

X-SMALL, SMALL, MEDIUM, LARGE.

ABOUT THE STYLE

OVER SIZED TANK TOP IN FINE COTTON. RIB IN BOTTOM HEM. »AERIAL TEXT PRINT« IN BLACK.



STYLE № 10 09 1-1

WING T-SHIRT

PRINT/DETAIL

FABRIC

100% FINE COTTON.

COLOR

BLACK.

AVAILABLE SIZES

X-SMALL, SMALL, MEDIUM, LARGE.

ABOUT THE STYLE

SHORT OVER SIZED T-SHIRT TOP IN FINE COTTON. RIB
IN BOTTOM HEM AND ON SLEEVES.



STYLE N° 10 10 1-1

KITE LONG T-SHIRT

PRINT/DETAIL

RAW VISIBLE FABRIC SEAMS.

FABRIC

100% COTTON RIB.

COLOR

GREY MELANGE.

AVAILABLE SIZES

X-SMALL, SMALL, MEDIUM, LARGE.

ABOUT THE STYLE

NARROW LONG SLEEVE T-SHIRT IN COTTON RIB. NARROW SLEEVES, RAW FABRIC SEAMS ON BACK.



STYLE № 10 10 1-2

KITE LONG T-SHIRT

PRINT/DETAIL
RAW VISIBLE FABRIC SEAMS.

FABRIC
100% COTTON RIB.

COLOR
BLACK.

AVAILABLE SIZES
X-SMALL, SMALL, MEDIUM, LARGE.

ABOUT THE STYLE
NARROW LONG SLEEVE T-SHIRT IN COTTON RIB. NAR-
ROW SLEEVES, RAW FABRIC SEAMS ON BACK.



STYLE № 10 11 1-1

CARDIGAN LONG T-SHIRT

PRINT/DETAIL
ELASTIC BAND & ZIPPER.

FABRIC
100% FINE COTTON.

COLOR
BLACK.

AVAILABLE SIZES
X-SMALL, SMALL, MEDIUM, LARGE.

ABOUT THE STYLE
NARROW LONG SLEEVE CARDIGAN IN FINE COTTON.
NARROW SLEEVES, RIB IN BOTTOM AND SLIGHTLY
TILTED ZIPPER IN FRONT. ELASTIC BAND VERTICALLY
IN BACK CREATES CREASES.



STYLE N° 10 12 1-1

CUT LONG VEST

PRINT/DETAIL

ELASTIC BAND & HOOKS AND EYES.

FABRIC

100% FINE COTTON.

COLOR

DUST.

AVAILABLE SIZES

X-SMALL, SMALL, MEDIUM, LARGE.

ABOUT THE STYLE

LONG JERSEY VEST. CUTS IN FRONT WITH ADJUST-
ABLE HOOKS AND EYES. OPEN DETAIL IN BACK.

ELASTIC BAND VERTICALLY IN BACK CREATES CREAS-
ES. RIB IN BOTTOM.



STYLE № 10 12 1-2

CUT LONG VEST

PRINT/DETAIL

ELASTIC BAND & HOOKS AND EYES.

FABRIC

100% FINE COTTON.

COLOR

BLACK.

AVAILABLE SIZES

X-SMALL, SMALL, MEDIUM, LARGE.

ABOUT THE STYLE

LONG JERSEY VEST. CUTS IN FRONT WITH ADJUST-
ABLE HOOKS AND EYES. OPEN DETAIL IN BACK.

ELASTIC BAND VERTICALLY IN BACK CREATES CREAS-
ES. RIB IN BOTTOM.



STYLE N° 10 13 1-1

ASKEW SWEAT

PRINT/DETAIL

»AERIAL AMBITIONS« PRINT.

FABRIC

100% COTTON.

COLOR

WHITE.

AVAILABLE SIZES

X-SMALL, SMALL, MEDIUM, LARGE.

ABOUT THE STYLE

STANDARD FIT SWEATSHIRT IN COTTON WITH SKEW SEAM UNDER LEFT ARM STRETCHING TO THE BACK. SLIGHTLY LONGER BACK. »AERIAL AMBITIONS« ART-WORK PRINTED ON FRONT.



STYLE № 10 13 1-2

ASKEW SWEAT

PRINT/DETAIL

»PLASTIC STRIPE« PRINT.

FABRIC

100% COTTON.

COLOR

GREY.

AVAILABLE SIZES

X-SMALL, SMALL, MEDIUM, LARGE.

ABOUT THE STYLE

STANDARD FIT SWEATSHIRT IN COTTON WITH SKEW SEAM UNDER LEFT ARM STRETCHING TO THE BACK. SLIGHTLY LONGER BACK. »PLASTIC STRIPE« ARTWORK PRINTED ON FRONT.



STYLE № 10 14 1-1

SHORT SWEAT VEST

PRINT/DETAIL
ELASTIC BAND.

FABRIC
100% COTTON.

COLOR
WHITE.

AVAILABLE SIZES
X-SMALL, SMALL, MEDIUM, LARGE.

ABOUT THE STYLE
SHORT SWEATSHIRT VEST IN COTTON WITH ELASTIC
BAND IN BACK THAT CREATES CREASES. RIB ON ARM
HOLES AND IN BOTTOM.



STYLE N° 10 14 1-2

SHORT SWEAT VEST

PRINT/DETAIL
ELASTIC BAND.

FABRIC
85% COTTON, 10% PU, 5% EA.

COLOR
ICE BLACK.

AVAILABLE SIZES
X-SMALL, SMALL, MEDIUM, LARGE.

ABOUT THE STYLE
SHORT SWEATSHIRT VEST IN COATED COTTON MATERIAL WITH ELASTIC BAND IN BACK THAT CREATES CREASES. RIB ON ARM HOLES AND IN BOTTOM.



STYLE № 10 15 1-1

AERIAL SWEAT JACKET

PRINT/DETAIL
RAW FABRIC SEAMS.

FABRIC
100% COTTON.

COLOR
CLOUD.

AVAILABLE SIZES
X-SMALL, SMALL, MEDIUM, LARGE.

ABOUT THE STYLE
BOLERO SWEATSHIRT JACKET IN BLEACHED COTTON
MATERIAL WITH RIB. NARROW SLEEVES. RAW FABRIC
SEAMS IN BACK



STYLE N° 10 16 1-1

WING T-SHIRT

PRINT/DETAIL

FABRIC

85% COTTON, 10% PU, 5% EA.

COLOR

ICE BLACK.

AVAILABLE SIZES

X-SMALL, SMALL, MEDIUM, LARGE.

ABOUT THE STYLE

SHORT OVER SIZED SWEATSHIRT TOP IN COATED COTTON QUALITY. RIB IN BOTTOM HEM AND ON SLEEVES.



STYLE № 10 17 1-1

FEATHER HOOD

PRINT/DETAIL

OVERLOCK SEAM TWISTED FROM NECK TO BOTTOM.

FABRIC

100% COTTON.

COLOR

DUST.

AVAILABLE SIZES

X-SMALL, SMALL, MEDIUM, LARGE.

ABOUT THE STYLE

NARROW HOOD IN FINE COTTON WITH OVERLOCK SEAM STRETCHING FROM FRONT OF NECK AROUND THE GARMENT DOWN TO RIGHT SIDE. RAW HEMS.



STYLE N° 10 17 1-2

FEATHER HOOD

PRINT/DETAIL

OVERLOCK SEAM TWISTED FROM NECK TO BOTTOM.

FABRIC

100% COTTON.

COLOR

BLACK.

AVAILABLE SIZES

X-SMALL, SMALL, MEDIUM, LARGE.

ABOUT THE STYLE

NARROW HOOD IN FINE COTTON WITH OVERLOCK SEAM STRETCHING FROM FRONT OF NECK AROUND THE GARMENT DOWN TO RIGHT SIDE. RAW HEMS.



STYLE № 10 18 1-1

NEST HOODED CARDIGAN

PRINT/DETAIL
ELASTIC BAND & ZIPPER.

FABRIC
100% COTTON.

COLOR
GREY.

AVAILABLE SIZES
X-SMALL, SMALL, MEDIUM, LARGE.

ABOUT THE STYLE
HOOD IN COTTON WITH TWISTED RAW FABRIC
SEAMS AROUND THE SLEEVES AND SLIGHTLY TILTED
ZIPPER IN FRONT. ELASTIC BAND VERTICALLY IN BACK
CREATES CREASES. OPEN IN BACK. TWISTED HEM IN
BOTTOM.



STYLE № 10 18 1-2

NEST HOODED CARDIGAN

PRINT/DETAIL
ELASTIC BAND & ZIPPER.

FABRIC
100% COTTON.

COLOR
BLACK.

AVAILABLE SIZES
X-SMALL, SMALL, MEDIUM, LARGE.

ABOUT THE STYLE
HOOD IN COTTON WITH TWISTED RAW FABRIC
SEAMS AROUND THE SLEEVES AND SLIGHTLY TILTED
ZIPPER IN FRONT. ELASTIC BAND VERTICALLY IN BACK
CREATES CREASES. OPEN IN BACK. TWISTED HEM IN
BOTTOM.



STYLE № 10 19 1-1

FAIL CARDIGAN

PRINT/DETAIL

FABRIC
100% COTTON.

COLOR
WHITE.

AVAILABLE SIZES
X-SMALL, SMALL, MEDIUM, LARGE.

ABOUT THE STYLE
LOOSE WRAP CARDIGAN WITH TWO BUTTONS. RAW
FABRIC SEAMS ON BACK. RIB AROUND BODY. NAR-
ROW SLEEVES.



STYLE № 10 19 1-2

FAIL CARDIGAN

PRINT/DETAIL

FABRIC

100% COTTON.

COLOR

CLOUD.

AVAILABLE SIZES

X-SMALL, SMALL, MEDIUM, LARGE.

ABOUT THE STYLE

LOOSE WRAP CARDIGAN WITH TWO BUTTONS. RAW
FABRIC SEAMS ON BACK. RIB AROUND BODY. NAR-
ROW SLEEVES. BLEACHED FABRIC EFFECT.



STYLE N° 10 20 1-1

FLEDGE CARDIGAN

PRINT/DETAIL
ELASTIC BAND & ZIPPER.

FABRIC
100% COTTON.

COLOR
BLACK.

AVAILABLE SIZES
X-SMALL, SMALL, MEDIUM, LARGE.

ABOUT THE STYLE
NARROW CARDIGAN WITH SLIGHTLY TILTED ZIPPER IN
FRONT. THREE ELASTIC BANDS ON EACH SLEEVE CRE-
ATES CREASES. OPEN RIB DETAIL IN FRONT NECK. RIB
IN BOTTOM.



STYLE N° 10 21 1-1

ASKEW KNIT

PRINT/DETAIL

FABRIC

60% COTTON, 40% SE.

COLOR

WHITE.

AVAILABLE SIZES

X-SMALL, SMALL, MEDIUM, LARGE.

ABOUT THE STYLE

STANDARD FIT KNIT IN COTTON WITH SKEW SEAM
UNDER LEFT ARM STRETCHING TO THE BACK. NAR-
ROW SLEEVES. SLIGHTLY LONGER BACK.



STYLE № 10 21 1-2

ASKEW KNIT

PRINT/DETAIL

FABRIC

100% COTTON.

COLOR

GREY.

AVAILABLE SIZES

X-SMALL, SMALL, MEDIUM, LARGE.

ABOUT THE STYLE

STANDARD FIT KNIT IN COTTON WITH SKEW SEAM
UNDER LEFT ARM STRETCHING TO THE BACK. NAR-
ROW SLEEVES. SLIGHTLY LONGER BACK.



STYLE N° 10 21 1-3

ASKEW KNIT

PRINT/DETAIL

FABRIC

100% COTTON.

COLOR

BLACK.

AVAILABLE SIZES

X-SMALL, SMALL, MEDIUM, LARGE.

ABOUT THE STYLE

STANDARD FIT KNIT IN COTTON WITH SKEW SEAM
UNDER LEFT ARM STRETCHING TO THE BACK. NAR-
ROW SLEEVES. SLIGHTLY LONGER BACK.



STYLE N° 10 22 1-1

CAVITY KNIT CARDIGAN

PRINT/DETAIL
VISIBLE RAW FABRIC SEAMS.

FABRIC
100% VISCOSE.

COLOR
CHARCOAL.

AVAILABLE SIZES
X-SMALL, SMALL, MEDIUM, LARGE.

ABOUT THE STYLE
SLIGHTLY OVER SIZED KNITTED CARDIGAN IN
SOFT VISCOSE WITH TWISTED RAW FABRIC SEAMS
AROUND THE NARROW SLEEVES. ADJUSTABLE OPEN-
ING WITH BUTTONS



STYLE N° 10 23 1-1

FEATHER KNIT

PRINT/DETAIL

VISIBLE RAW FABRIC SEAMS.

FABRIC

100% VISCOSE.

COLOR

CHARCOAL.

AVAILABLE SIZES

X-SMALL, SMALL, MEDIUM, LARGE.

ABOUT THE STYLE

NARROW KNITTED SWEATER IN FINE COTTON WITH
OVERLOCK SEAM STRETCHING FROM FRONT OF NECK
AROUND THE GARMENT DOWN TO LEFT SIDE.



STYLE № 10 24 1-1

FLEDGE SHIRT

PRINT/DETAIL
ELASTIC BAND.

FABRIC
100% VISCOSE.

COLOR
WHITE.

AVAILABLE SIZES
X-SMALL, SMALL, MEDIUM, LARGE.

ABOUT THE STYLE
REGULAR FIT SHIRT WITH DOUBLE LAYER OF FABRIC
OVER CHEST. HIDDEN BUTTONS. ELASTIC BAND VERTI-
CAL OVER BACK AND HORIZONTAL OVER SLEEVES
CREATES CREASES.



STYLE N° 10 24 1-2

FLEDGE SHIRT

PRINT/DETAIL
ELASTIC BAND.

FABRIC
100% VISCOSE.

COLOR
BLACK.

AVAILABLE SIZES
X-SMALL, SMALL, MEDIUM, LARGE.

ABOUT THE STYLE
REGULAR FIT SHIRT WITH DOUBLE LAYER OF FABRIC
OVER CHEST. HIDDEN BUTTONS. ELASTIC BAND VERTI-
CAL OVER BACK AND HORIZONTAL OVER SLEEVES
CREATES CREASES.



STYLE № 10 25 1-1

LEVEL SHIRT

PRINT/DETAIL
ELASTIC BAND.

FABRIC
100% VISCOSE.

COLOR
WHITE.

AVAILABLE SIZES
X-SMALL, SMALL, MEDIUM, LARGE.

ABOUT THE STYLE
REGULAR FIT SHIRT WITH DOUBLE LAYER OF FABRIC
OVER CHEST AND SHORT SLEEVES. HIDDEN BUTTONS.
ELASTIC BAND HORIZONTALLY OVER CHEST AND
SLEEVES CREATES CREASES.



STYLE № 10 26 1-1

HUBRIS SHIRT VEST

PRINT/DETAIL

FABRIC

100% VISCOSE.

COLOR

BLACK.

AVAILABLE SIZES

X-SMALL, SMALL, MEDIUM, LARGE.

ABOUT THE STYLE

LONG SHIRT VEST WITH SEAMS ON BACK. HIDDEN
BUTTONS.

STYLE N° 10 27 1-1

FEATHER JEANS

PRINT/DETAIL

TWISTED SEAMS & ZIPPER SIDE POCKET.

FABRIC

98% COTTON, 2% EA.

COLOR

DUST WASH.

AVAILABLE SIZES

X-SMALL, SMALL, MEDIUM, LARGE.

ABOUT THE STYLE

REGULAR FIT JEANS WITH ZIPPER POCKET ON LEFT SIDE. TWISTED SEAMS OVER LEGS.



PLEASE NOTE - COMES IN DUST COLOUR



STYLE N° 10 28 1-1

LEVEL JEANS

PRINT/DETAIL

FOLD OVER LEG & ZIPPER SIDE POCKET.

FABRIC

98% COTTON, 2% EA.

COLOR

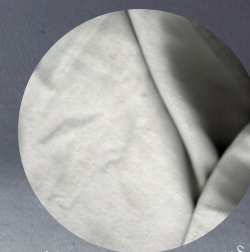
DUST WASH.

AVAILABLE SIZES

X-SMALL, SMALL, MEDIUM, LARGE.

ABOUT THE STYLE

REGULAR FIT JEANS WITH ZIPPER POCKET ON LEFT SIDE. FOLDED CREASE OVER LOWER LEGS.



PLEASE NOTE - COMES IN DUST COLOUR



STYLE № 10 29 1-1

MELT SWEAT PANTS

PRINT/DETAIL

FABRIC
100% COTTON.

COLOR
DUST.

AVAILABLE SIZES
X-SMALL, SMALL, MEDIUM, LARGE.

ABOUT THE STYLE
OVER SIZED SWEAT PANTS WITH DROPPED CROTCH.
NARROW IN BOTTOM OF LEGS. TWISTED SEAMS
OVER LEGS AND POCKETS IN FRONT AND BACK.
ELASTIC BAND IN WAIST.



STYLE № 10 30 1-1

CIRCULAR SWEAT PANTS

PRINT/DETAIL

FABRIC

100% COTTON.

COLOR

GREY.

AVAILABLE SIZES

X-SMALL, SMALL, MEDIUM, LARGE.

ABOUT THE STYLE

REGULAR FIT SWEAT PANTS WITH TWISTED SEAMS
OVER LEGS. NARROW IN BOTTOM OF LEGS WITH
WIDE RIB IN BOTTOM. POCKETS IN FRONT. ELASTIC
BAND IN WAIST.



STYLE N° 10 31 1-1

MELT SWEAT SHORTS

PRINT/DETAIL

FABRIC

85% COTTON, 10% PU, 5% EA.

COLOR

ICE BLACK.

AVAILABLE SIZES

X-SMALL, SMALL, MEDIUM, LARGE.

ABOUT THE STYLE

SLIGHTLY OVER SIZED SWEAT PANTS SHORTS WITH
DROPPED CROTCH IN COATED COTTON MATERIAL.
POCKETS IN FRONT AND BACK. ELASTIC BAND IN
WAIST AND RIB IN BOTTOM OF LEGS.



STYLE № 10 32 1-1

MELT LINEN PANTS

PRINT/DETAIL

FABRIC

96% LINEN, 4% PU.

COLOR

CHARCOAL.

AVAILABLE SIZES

X-SMALL, SMALL, MEDIUM, LARGE.

ABOUT THE STYLE

OVER SIZED LINEN PANTS WITH DROPPED CROTCH.
NARROW IN BOTTOM OF LEGS. TWISTED SEAMS
OVER LEGS AND POCKETS IN FRONT AND BACK.
ELASTIC BAND IN WAIST.



STYLE № 10 33 1-1

FALLEN LINEN PANTS

PRINT/DETAIL

FABRIC

96% LINEN, 4% PU.

COLOR

CHARCOAL.

AVAILABLE SIZES

X-SMALL, SMALL, MEDIUM, LARGE.

ABOUT THE STYLE

REGULAR FIT LINEN PANTS. NARROW IN BOTTOM OF
LEGS WITH WIDE RIB IN BOTTOM. POCKETS IN FRONT
AND BACK. ELASTIC BAND IN WAIST.



STYLE N° 10 34 1-1

MELT LINEN SHORTS

PRINT/DETAIL

FABRIC

96% LINEN, 4% PU.

COLOR

DUST.

AVAILABLE SIZES

X-SMALL, SMALL, MEDIUM, LARGE.

ABOUT THE STYLE

LINEN SHORTS WITH SLIGHTLY DROPPED CROTCH.
POCKETS IN FRONT AND BACK. ELASTIC BAND IN
WAIST AND FOLD UP DETAIL IN BOTTOM OF LEGS.



STYLE N° 10 35 1-1

BLIND BLAZER

PRINT/DETAIL

FABRIC

96% LINEN, 4% PU.

COLOR

DUST.

AVAILABLE SIZES

X-SMALL, SMALL, MEDIUM, LARGE.

ABOUT THE STYLE

TWO-BUTTONED CLASSIC NARROW FITTED BLAZER WITH LONG NARROW SLEEVES. TRIANGLE DETAIL IN NECK. FULLY CONSTRUCTED. BUTTONS IN FRONT AND ON SLEEVES.



STYLE N° 10 36 1-1

LEVEL CUT BLAZER

PRINT/DETAIL

FABRIC

87% LINEN, 13% PA.

COLOR

DARK CLOUD.

AVAILABLE SIZES

X-SMALL, SMALL, MEDIUM, LARGE.

ABOUT THE STYLE

LONG FITTED BLAZER WITH NARROW SLEEVES. CUTS
ON BOTH SIDES IN FRONT WITH HOOKS AND EYES
FOR ADJUSTABLE STYLING. BUTTONS ON SLEEVES.



STYLE N° 10 37 1-1

NEST BLAZER

PRINT/DETAIL

FABRIC

96% LINEN, 4% PU.

COLOR

CHARCOAL.

AVAILABLE SIZES

X-SMALL, SMALL, MEDIUM, LARGE.

ABOUT THE STYLE

NARROW FITTED BLAZER WITH NARROW SLEEVES.
CUTS ON BOTH SIDES IN FRONT WITH HOOKS AND
EYES FOR ADJUSTABLE STYLING. BUTTONS ON
SLEEVES. OPEN CONSTRUCTION IN BACK.



STYLE N° 10 38 1-1

KITE JACKET

PRINT/DETAIL
ELASTIC BAND & ZIPPER.

FABRIC
100% COTTON.

COLOR
BLACK.

AVAILABLE SIZES
X-SMALL, SMALL, MEDIUM, LARGE.

ABOUT THE STYLE
NARROW FITTED JACKET WITH THREE ELASTIC BANDS
ON EACH SLEEVE AND VERTICAL ON BACK CREATES
CREASES. TWO POCKETS ON FRONT AND INNER
POCKET.



STYLE № 10 39 1-1

MYTH BOMBER JACKET

PRINT/DETAIL
ZIPPER.

FABRIC
87% LINEN, 13% PA.

COLOR
DARK CLOUD.

AVAILABLE SIZES
X-SMALL, SMALL, MEDIUM, LARGE.

ABOUT THE STYLE
REGULAR FITTED BOMBER STYLE JACKET WITH DOUBLE LAYER FABRIC OVER CHEST, BACK AND OVER UPPER SLEEVES. TWO ZIPPER POCKETS ON FRONT AND INNER POCKET. RIB IN NECK AND BOTTOM.



STYLE N° 10 40 1-1

ROCKET COAT

PRINT/DETAIL

ELASTIV BAND & ZIPPER.

FABRIC

79% LINEN, 21% PES.

COLOR

DUST MELANGE.

AVAILABLE SIZES

X-SMALL, SMALL, MEDIUM, LARGE.

ABOUT THE STYLE

ASSYMETRIC COAT IN SOFT LINEN WITH TWO POCKETS IN FRONT. NARROW SLEEVES. VERTICAL ELASTIC BAND DETAIL ON BACK. SHORTER IN BACK THAN FRONT.



STYLE N° 10 41 1-1

FEATHER PAW

PRINT/DETAIL
ZIPPER.

FABRIC
96% LINEN, 4% PU.

COLOR
CHARCOAL/DUST.

AVAILABLE SIZES
ONE SIZE.

ABOUT THE STYLE
FINGERLESS GLOVE IN REVERSIBLE LINEN FABRIC.
CHARCOAL COLOUR ON ONE SIDE AND DUST ON
THE OTHER. TWISTED ZIPPER.



STYLE № 10 42 1-1

PYRAMID BAG

PRINT/DETAIL
ZIPPER.

FABRIC
100% LEATHER.

COLOR
BLACK.

AVAILABLE SIZES
ONE SIZE.

ABOUT THE STYLE
PYRAMID SHAPED BAG IN LEATHER WITH ONE POCKET ON OUTER SIDE. LONG ZIPPER OPENING. TWO SEPARATE HANDLES.



STYLE N° 10 42 1-2

PYRAMID BAG

PRINT/DETAIL
ZIPPER.

FABRIC
100% LINEN.

COLOR
BLACK.

AVAILABLE SIZES
ONE SIZE.

ABOUT THE STYLE
PYRAMID SHAPED BAG IN LINEN WITH ONE POCKET
ON OUTER SIDE. LONG ZIPPER OPENING. TWO SEPA-
RATE HANDLES.



STYLE № 10 43 1-1

FEATHER BAG

PRINT/DETAIL
ZIPPER.

FABRIC
100% LINEN.

COLOR
BLACK.

AVAILABLE SIZES
ONE SIZE.

ABOUT THE STYLE
CYLINDER SHAPED BAG IN LINEN WITH LONG TWIST-
ED ZIPPER OPENING. TWO SEPARATE HANDLES.



LOOKBOOK CREDITS
PHOTOGRAPHY — AXEL ENGSTRÖM
HAIR & MAKEUP — ELVA AHLBIN
MODELS — ADAM P AT STOCKHOLMSGRUPPEN & MAJA W AT MIKAS

WWW.ODEUR.SE

